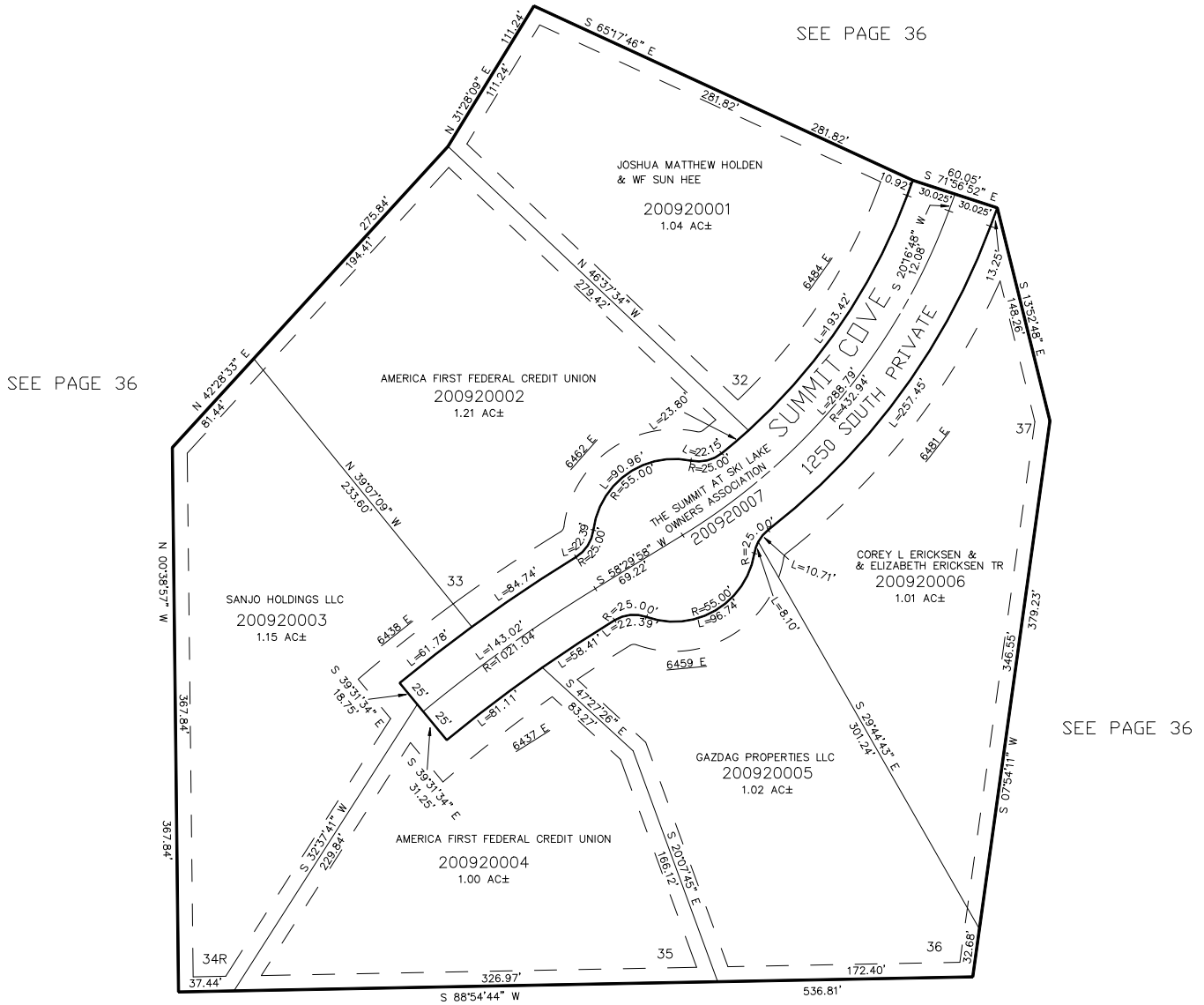


PART OF THE NW.1/4, OF SECTION 24, T.6N., R.1E., S.L.B. & M.
THE SUMMIT AT SKI LAKE No. 8

IN WEBER COUNTY

TAXING UNIT: 318

SCALE 1" = 60'



SEE PAGE 36

SEE PAGE 36

SEE PAGE 36

SEE PAGE 36

FOR COMPLETE ENG DATA SEE ORIGINAL DEDICATION PLAT IN BOOK 61, PAGE 43 OF RECORDS.

10' UTILITY & DRAINAGE EASEMENTS EACH SIDE OF PROPERTY LINES AS INDICATED BY DASHED LINES EXCEPT AS OTHERWISE SHOWN.